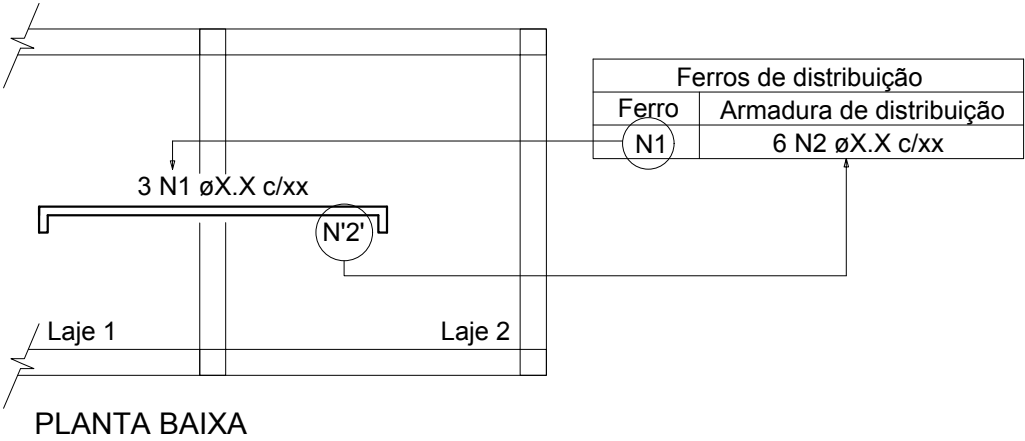
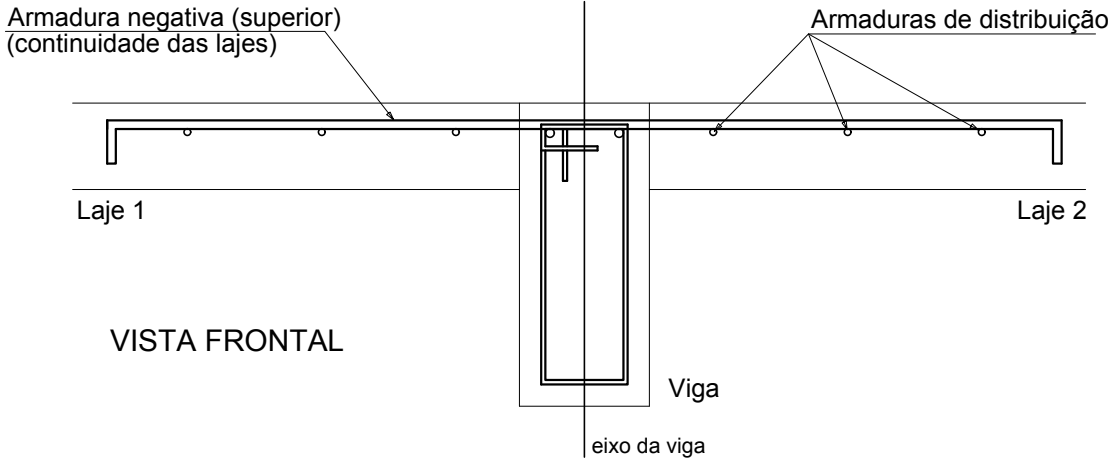
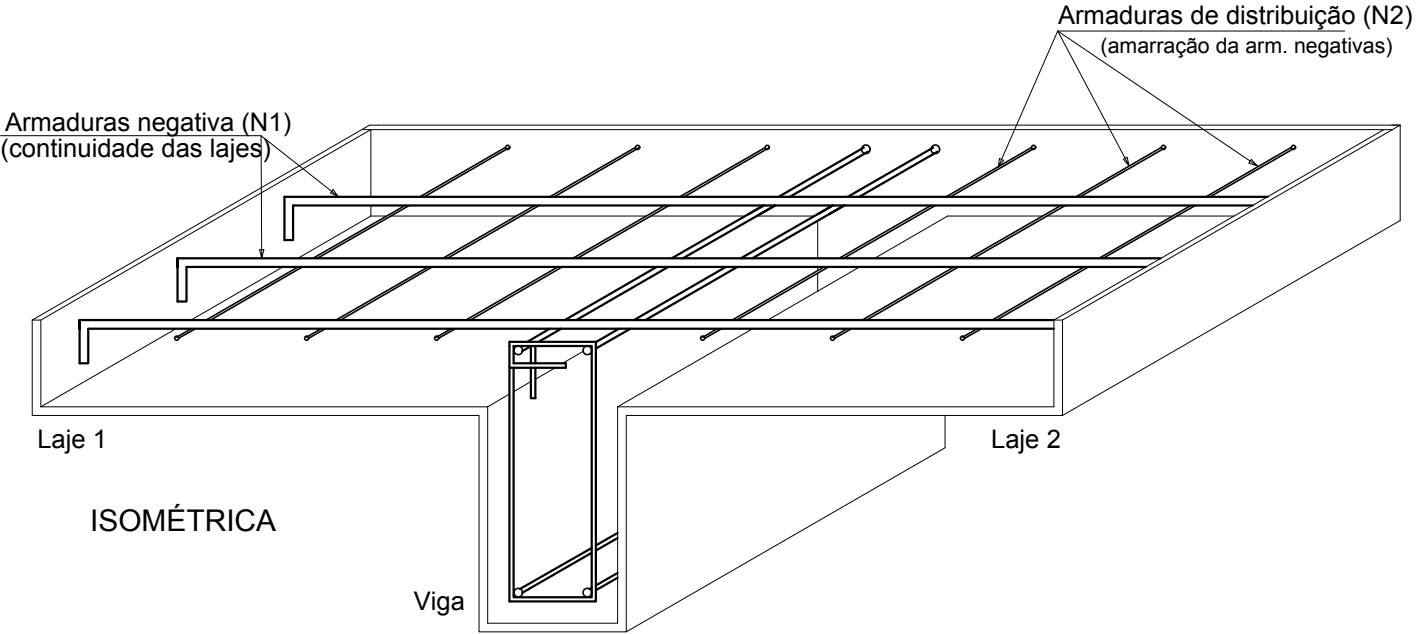


DETALHE DA ARMADURA DE SUPERIOR DE CONTINUIDADE DA LAJE
E MONTAGEM DA ARMADURA DE DISTRIBUIÇÃO






Vigas			
Nome	Seção (cm)	Elevação (cm)	Nível (cm)
V1	14x40	-20	78
V2	18x40	-20	78
V3	18x40	-20	78
V4	18x40	-20	78
V5	14x40	-10	88
V6	14x40	-10	88
V7	18x40	0	98
V8	14x40	0	98
V9	14x40	0	98
V10	14x40	0	98
V11	14x40	0	98
V12	14x40	0	98
V13	18x40	0	98
V14	14x50	0	98
V15	14x40	0	98
V16	24x40	0	98
V17	18x40	-20	78
V18	14x40	0	98
V19	14x50	0	98
V20	14x30	0	98
V21	18x40	-20	78
V22	14x30	-10	88
V23	24x50	0	98
V24	14x40	0	98
V25	14x30	-10	88
V26	18x50	0	98
V27	18x40	0	98
V28	14x30	-10	88
V29	14x40	0	98
V30	18x40	0	98
V31	14x30	0	98
V32	14x30	0	98
V33	14x30	0	98
V34	14x30	0	98
V35	18x40	-144	-46
V36	18x40	-144	-46
V37	18x40	-144	-46
V38	18x40	-144	-46
V39	18x30	-144	-46

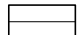
Pilares			
Nome	Seção (cm)	Elevação (cm)	Nível (cm)
P1	18x35	-20	78
P2	18x35	-20	78
P3	24x35	0	98
P4	24x35	0	98
P5	18x50	0	98
P6	18x50	0	98
P7	18x60	0	98
P8	18x35	-20	78
P9	24x55	0	98
P10	24x55	0	98
P11	18x55	0	98
P12	18x35	0	98
P13	24x55	0	98
P14	18x55	0	98
P15	18x35	0	98
P16	24x50	0	98
P17	14x35	0	98
P18	24x55	0	98
P19	24x50	0	98
P20	14x40	0	98
P21	24x55	0	98
P22	18x55	0	98
P23	18x35	0	98
P24	18x35	0	98
P25	18x35	0	98
P26	18x35	0	98
P27	24x35	0	98
P28	24x55	0	98
P29	18x55	0	98
P30	18x50	0	98
P31	24x35	0	98
P32	24x35	0	98
P33	18x30	0	98



Características dos materiais	
fck (kgf/cm²)	Ecs (kgf/cm²)
250	241500

Blocos de enchimento						
Detalhe	Tipo	Nome	Dimensões(cm)			Quantidade
			hb	bx	by	
1/2/3/4/5	Lajota cerâmica	B8/30/20	8	30	20	2524

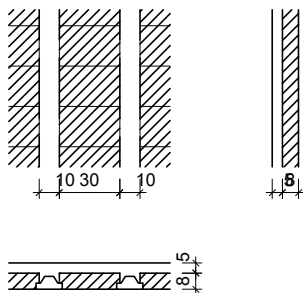
Lajes									
Dados						Sobrecarga (kgf/m²)			
Nome	Tipo	Altura (cm)	Elevação (cm)	Nível (cm)	Peso próprio (kgf/m²)	Adicional	Acidental	Localizada	Água
L1	Pré-moldada	13	-20	78	283	154	300	-	0
L2	Pré-moldada	13	-20	78	283	154	300	-	0
L3	Pré-moldada	13	-20	78	283	154	300	-	0
L4	Pré-moldada	13	-20	78	283	154	300	-	0
L5	Pré-moldada	13	-20	78	283	154	300	-	0
L6	Pré-moldada	13	-10	88	283	182	150	-	0
L7	Pré-moldada	13	-10	88	283	182	200	-	0
L8	Pré-moldada	13	-10	88	283	182	200	-	0
L9	Pré-moldada	13	-10	88	283	182	150	-	0
L10	Pré-moldada	13	-10	88	283	182	150	-	0
L11	Pré-moldada	13	-10	88	283	182	200	-	0
L12	Pré-moldada	13	0	98	283	182	150	-	0
L13	Pré-moldada	13	0	98	283	182	150	-	0
L14	Treliçada 1D	13	0	98	283	182	150	-	0
L15	Pré-moldada	13	0	98	283	154	150	sim	0
L16	Pré-moldada	13	0	98	283	154	150	-	0
L17	Pré-moldada	13	0	98	283	154	150	-	0
L18	Pré-moldada	13	0	98	283	154	150	sim	0
L19	Pré-moldada	13	0	98	283	154	150	-	0
L20	Pré-moldada	13	0	98	283	182	150	-	0
L21	Treliçada 1D	13	0	98	283	154	150	sim	0
L22	Treliçada 1D	13	0	98	283	154	150	-	0
L25	Maciça	13	-11	87.5	325	154	150	-	0
L26	Maciça	13	-11	87.5	325	154	150	-	0
L27	Maciça	13	-11	87.5	325	154	150	-	0
L28	Pré-moldada	13	0	98	283	154	150	-	0
L29	Maciça	13	-144	-46	325	182	200	-	1000
L30	Treliçada 1D	15	0	98	334	154	150	-	0
L31	Treliçada 1D	15	0	98	334	154	150	-	0
LE1	Maciça	15	-144	-46	692	171	250	-	0
LE2	Maciça	15	-144	-46	375	154	250	-	0
LE3	Maciça	15	0	98	692	171	250	-	0

Legenda dos pilares	
	Pilar que morre
	Pilar que passa
	Pilar que nasce

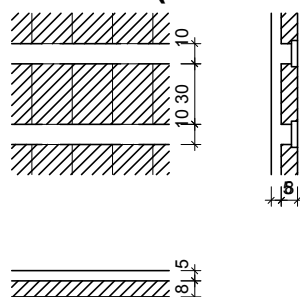
Legenda das vigas e paredes	
	Viga

Legenda das lajes	
	Laje
	Laje com elevação negativa

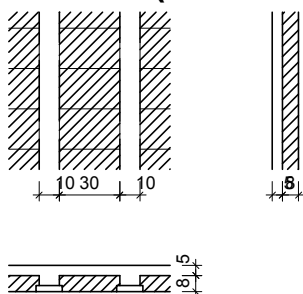
Detalhe 1 (esc. 1:30)



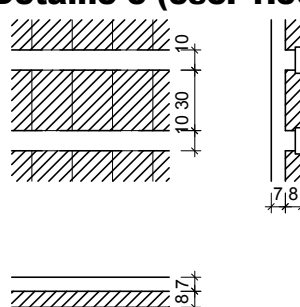
Detalhe 4 (esc. 1:30)



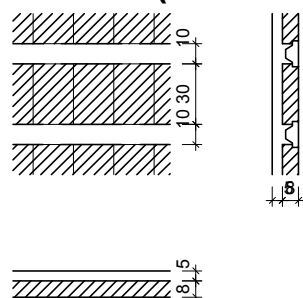
Detalhe 2 (esc. 1:30)



Detalhe 5 (esc. 1:30)

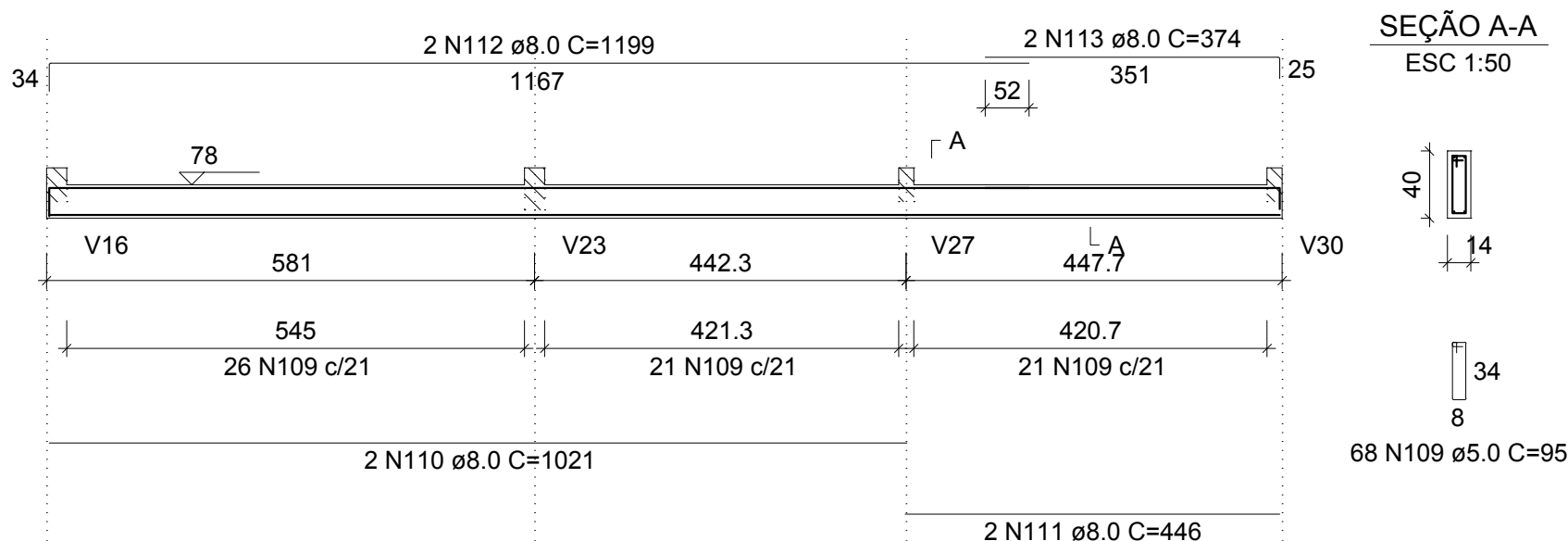


Detalhe 3 (esc. 1:30)



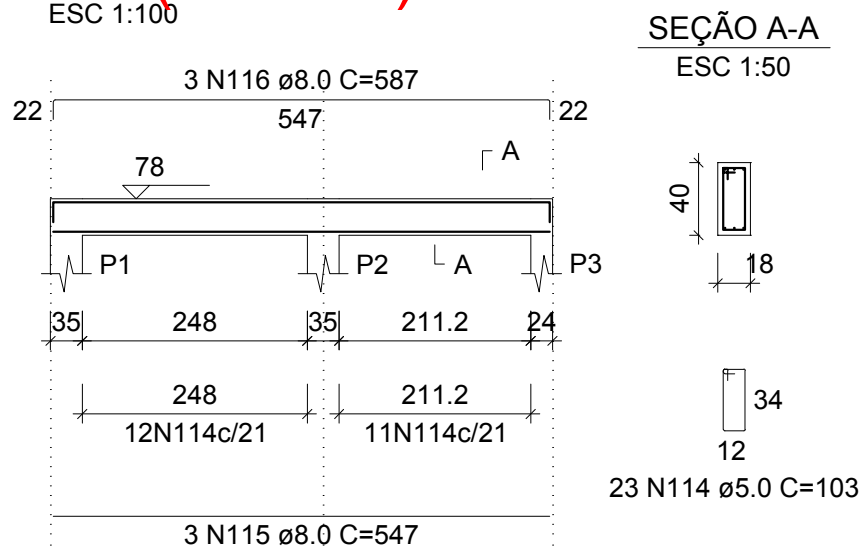
V1 (14 x 40)

ESC 1:100



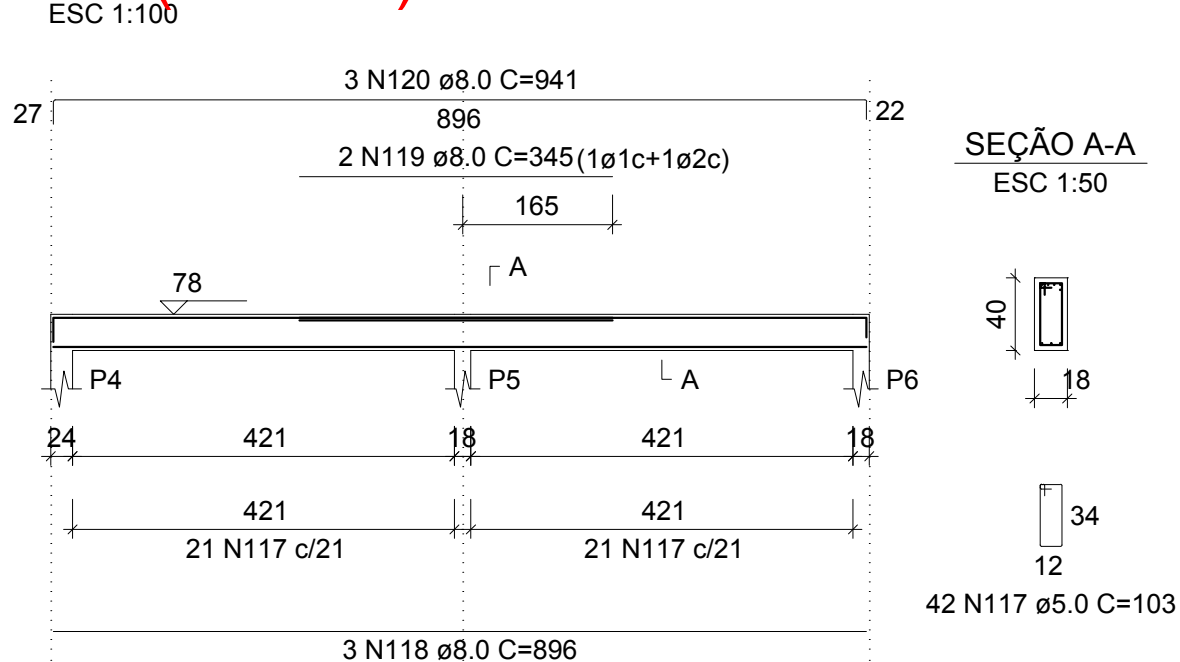
V2 (18 x 40)

ESC 1:100



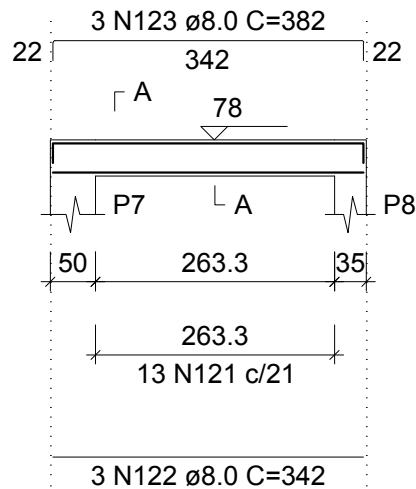
V3 (18 x 40)

ESC 1:100

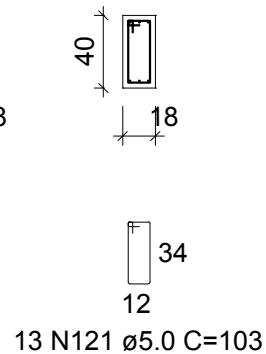


V4 (18 x 40)

ESC 1:100

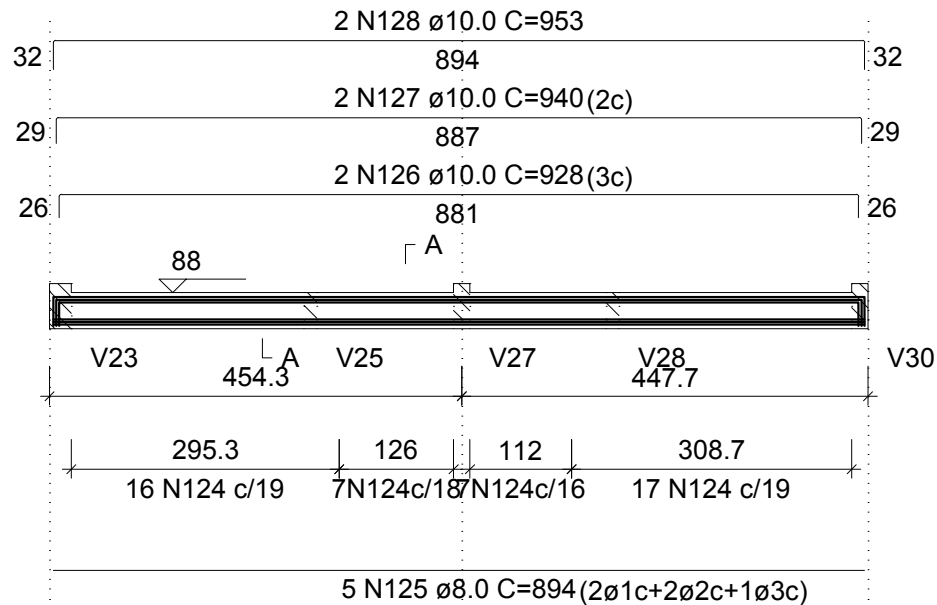


SEÇÃO A-A ESC 1:50

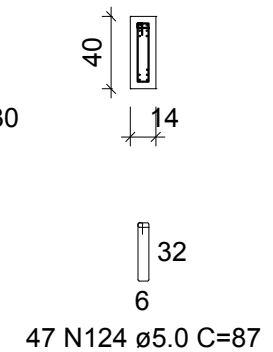


V5 (14 x 40)

ESC 1:100

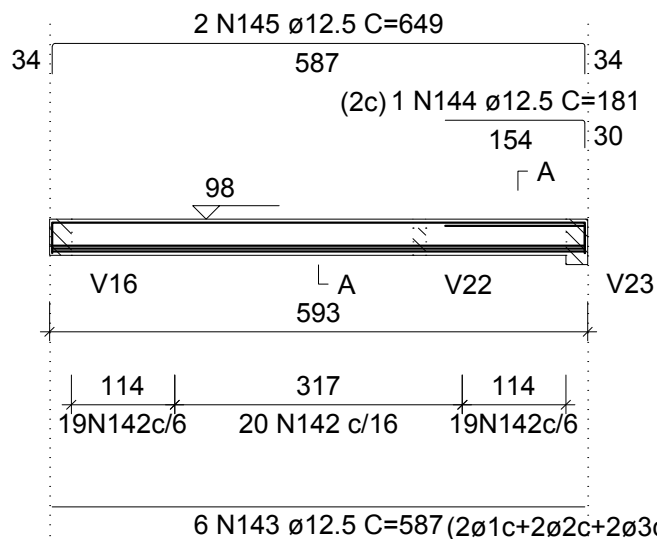


SEÇÃO A-A ESC 1:50

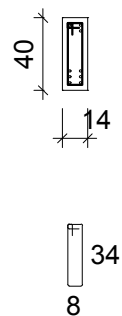


V8 (14 x 40)

ESC 1:100

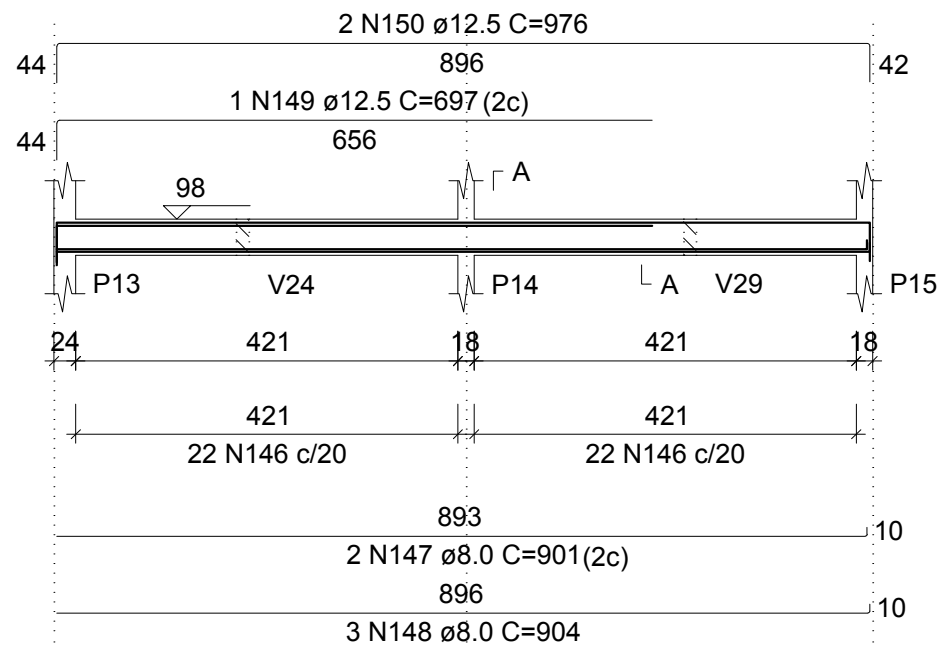


SEÇÃO A-A ESC 1:50

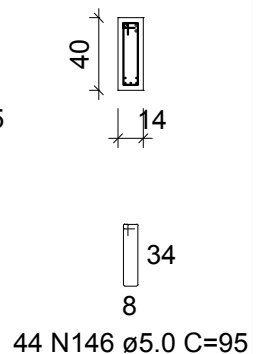


V9 (14 x 40)

ESC 1:100

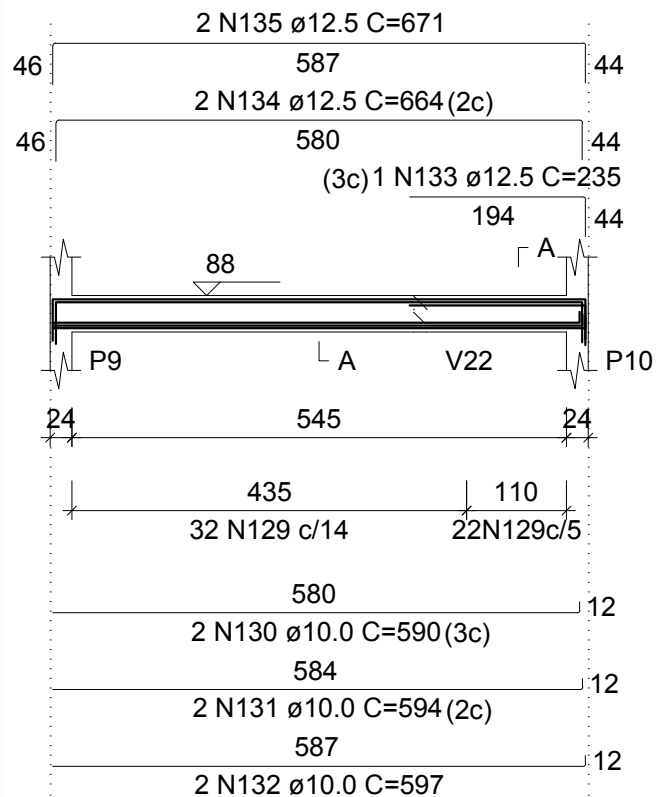


SEÇÃO A-A ESC 1:50



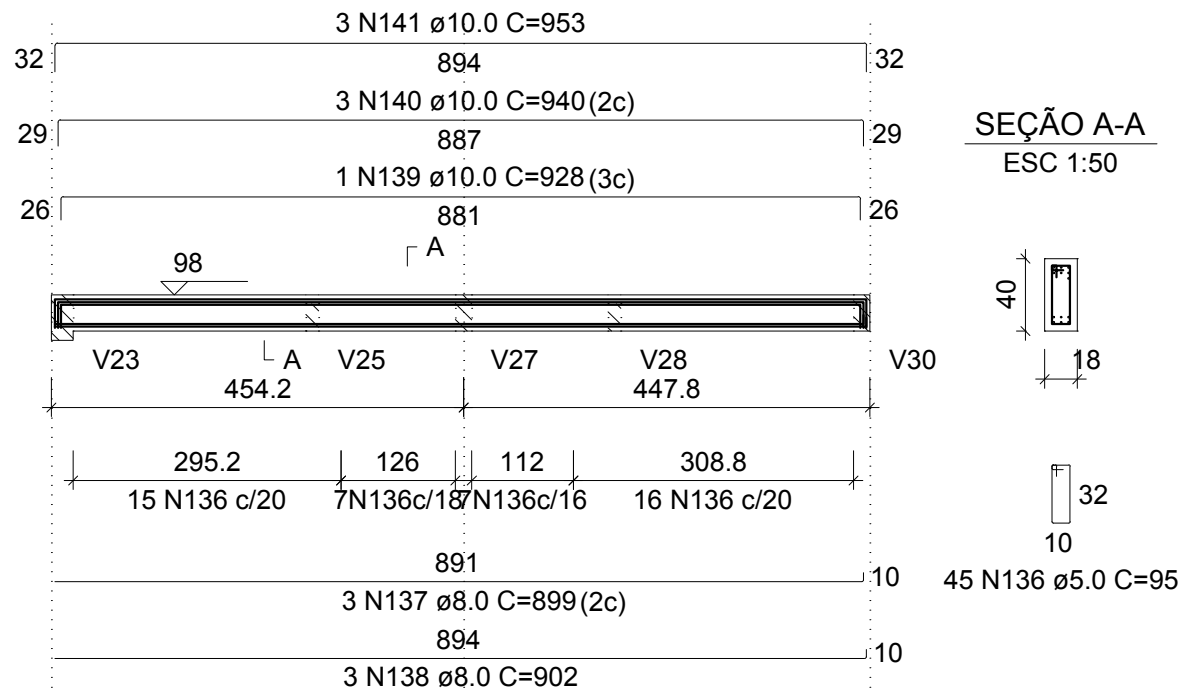
V6 (14 x 40)

ESC 1:100



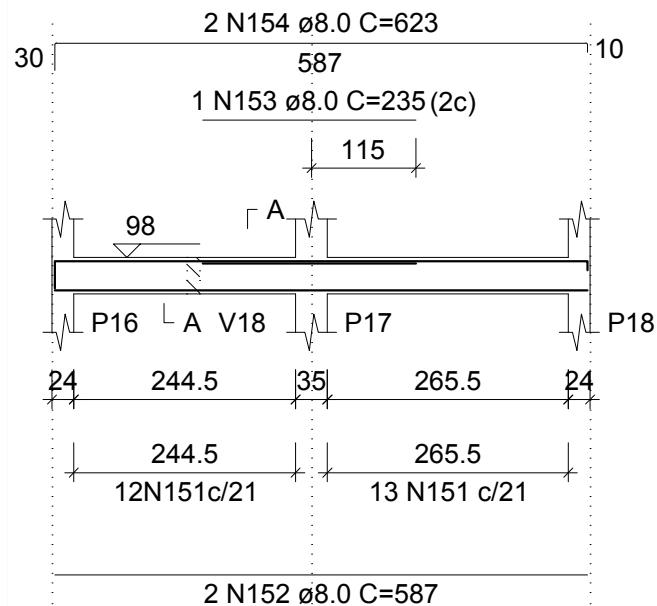
V7 (18 x 40)

ESC 1:100

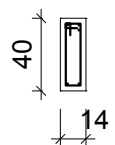


V10 (14 x 40)

ESC 1:100



SEÇÃO A-A ESC 1:50

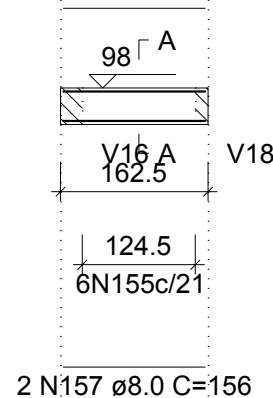


25 N151 ø5.0 C=95

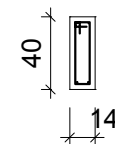
V11 (14 x 40)

ESC 1:100

2 N156 ø5.0 C=156



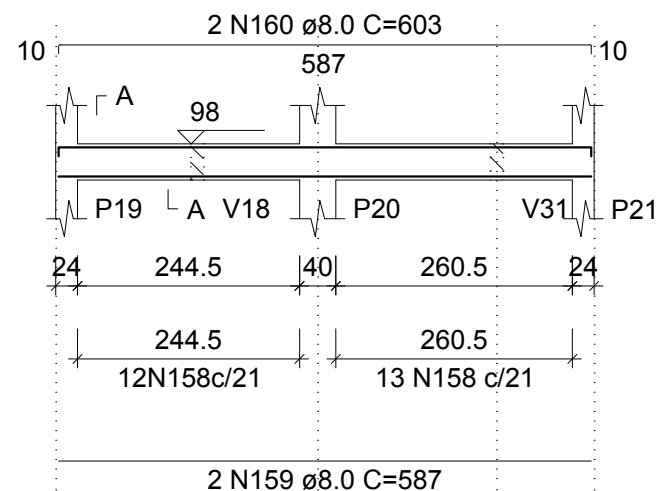
SEÇÃO A-A ESC 1:50



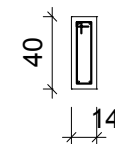
6 N155 ø5.0 C=95

V12 (14 x 40)

ESC 1:100

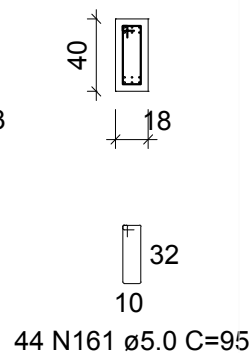
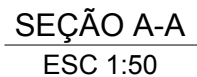


SEÇÃO A-A ESC 1:50

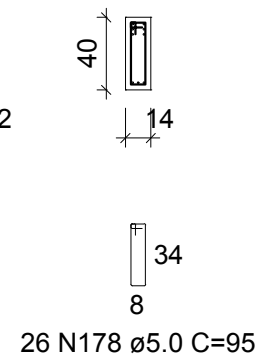
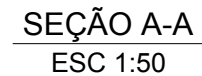


25 N158 ø5.0 C=95

ESC 1:100

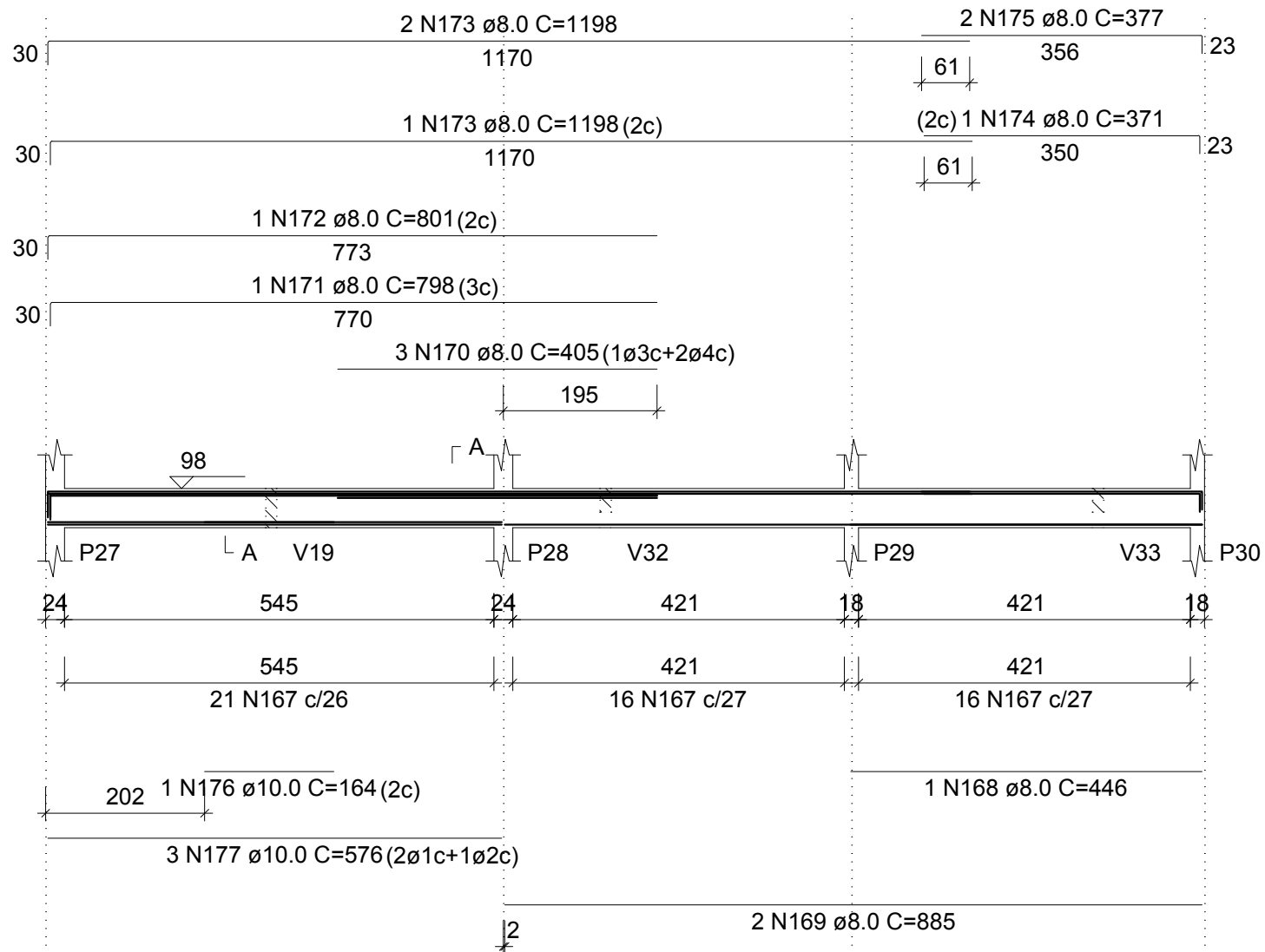


ESC 1:100

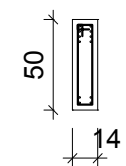


V14 (14 x 50)

ESC 1:100



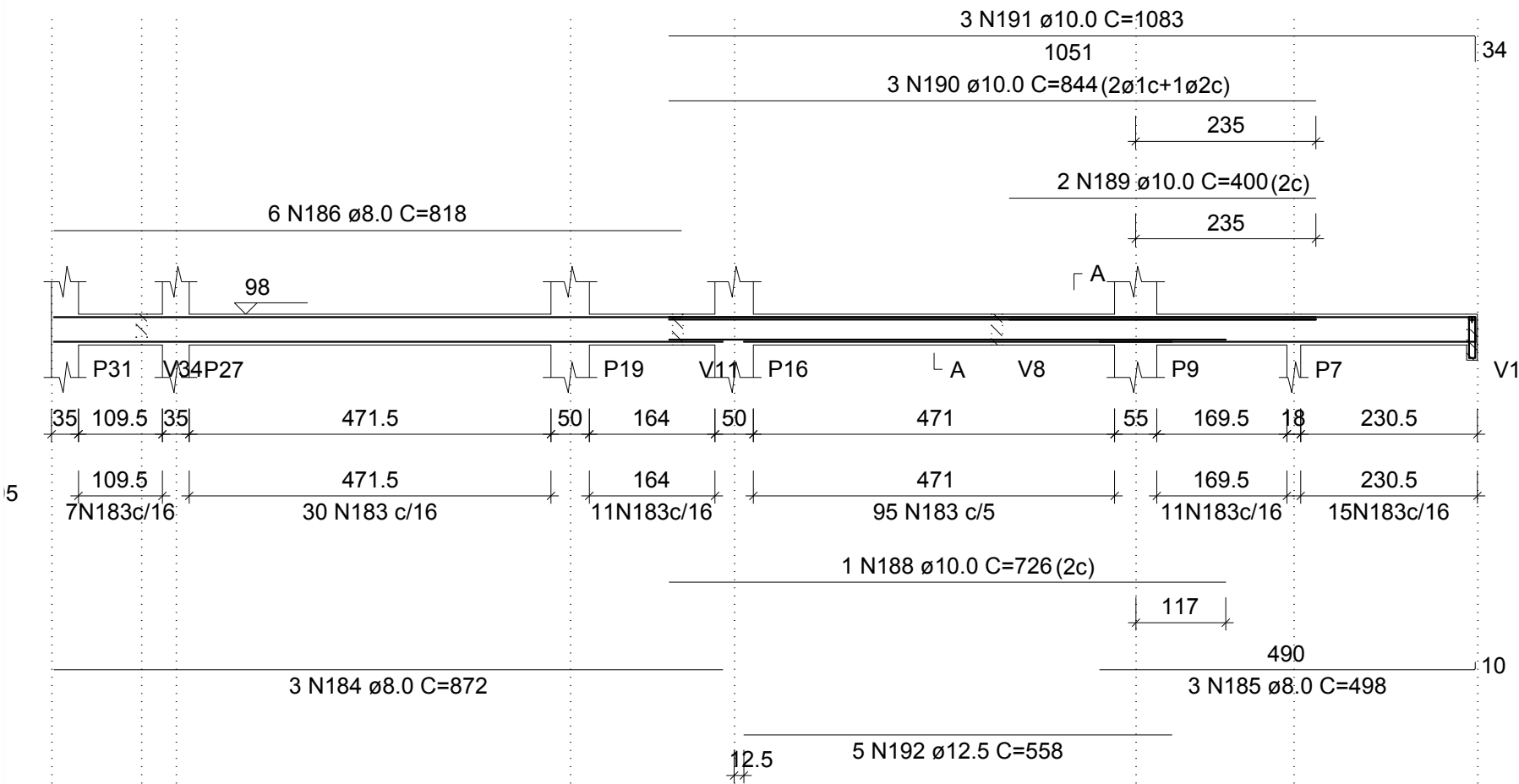
SEÇÃO A-A
ESC 1:50



53 N167 $\varnothing 5.0$ C=115

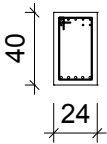
V16 (24 x 40)

ESC 1:100



SEÇÃO A-A

ESC 1:50



169 N183 \varnothing 5.0 C=115

SUSPENSÃO V1

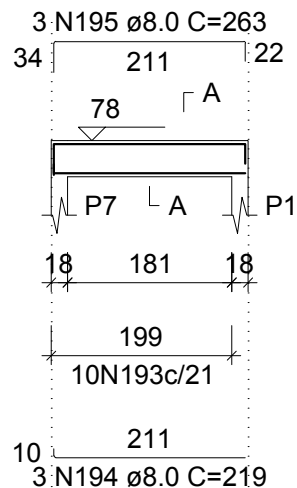
ESC 1:50



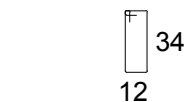
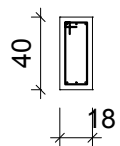
1 N187 \varnothing 8.0 C=136

V17 (18 x 40)

ESC 1:100



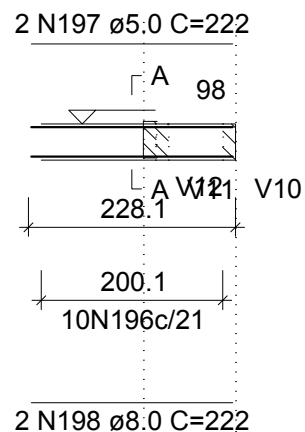
SEÇÃO A-A
ESC 1:50



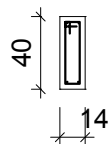
10 N193 \varnothing 5.0 C=103

V18 (14 x 40)

ESC 1:100



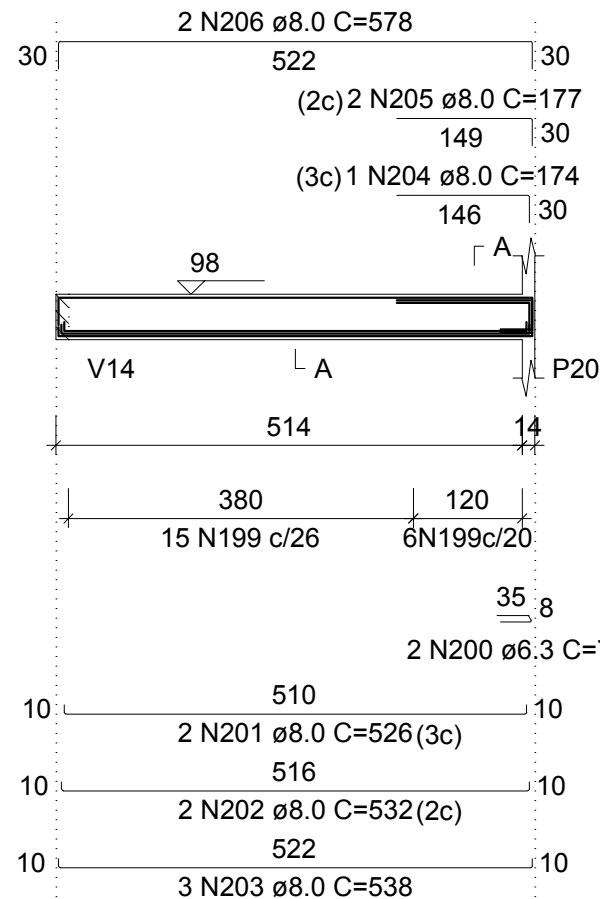
SEÇÃO A-A
ESC 1:50



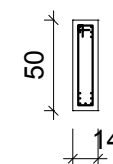
10 N196 \varnothing 5.0 C=95

V19 (14 x 50)

ESC 1:100



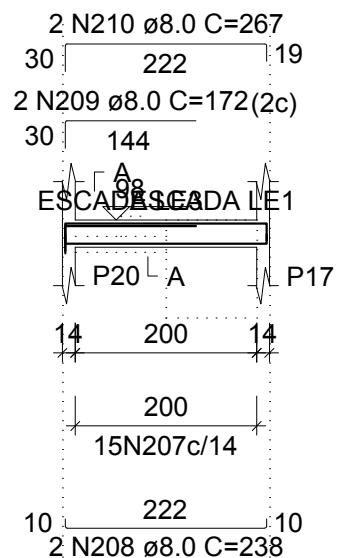
SEÇÃO A-A
ESC 1:50



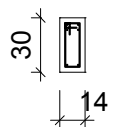
21 N199 \varnothing 5.0 C=115

V20 (14 x 30)

ESC 1:100



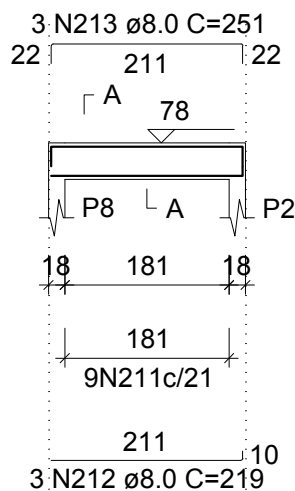
SEÇÃO A-A ESC 1:50



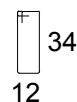
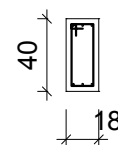
15 N207 ø5.0 C=75

V21 (18 x 40)

ESC 1:100



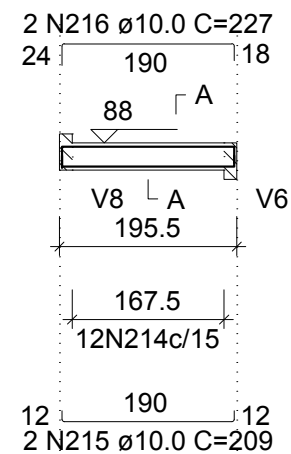
SEÇÃO A-A ESC 1:50



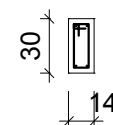
9 N211 ø5.0 C=103

V22 (14 x 30)

ESC 1:100



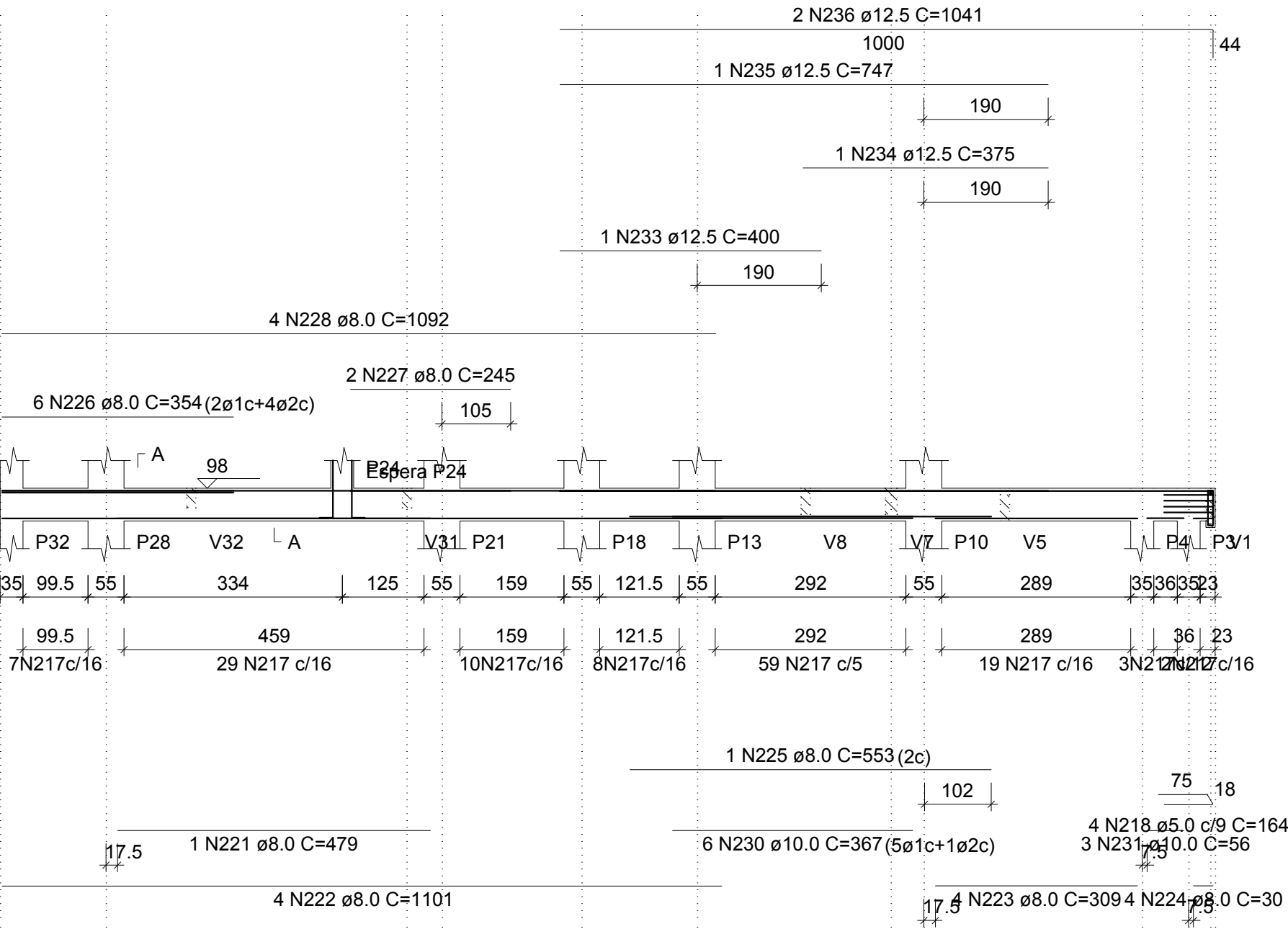
SEÇÃO A-A ESC 1:50



12 N214 ø5.0 C=75

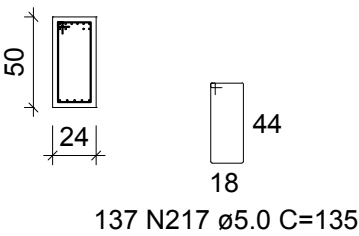
V23 (24 x 50)

ESC 1:100



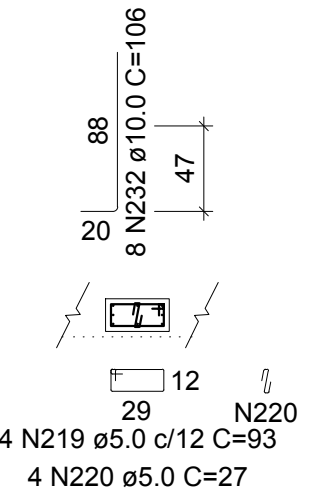
SEÇÃO A-A

ESC 1:50



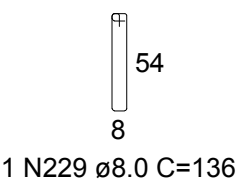
ESPERA P24

ESC 1:50



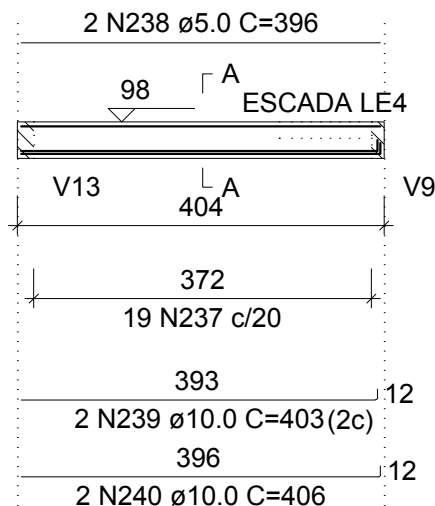
SUSPENSÃO V1

ESC 1:50



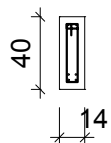
V24 (14 x 40)

ESC 1:100



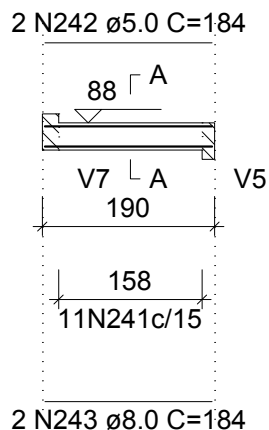
SEÇÃO A-A

ESC 1:50



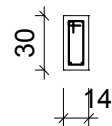
V25 (14 x 30)

ESC 1:100



SEÇÃO A-A

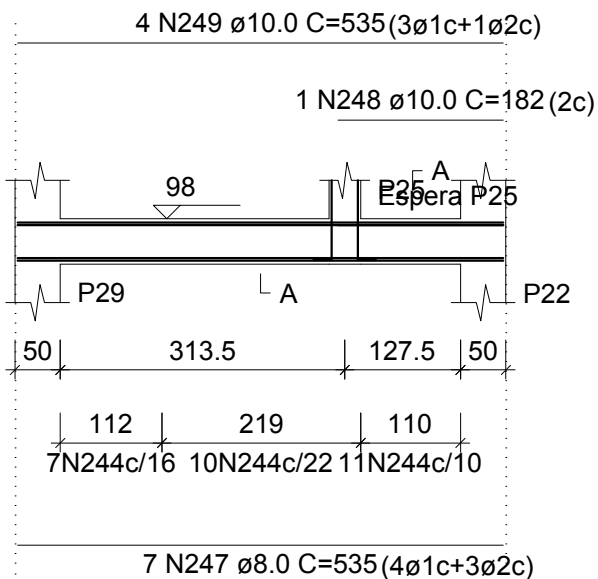
ESC 1:50



11 N241 \varnothing 5.0 C=75

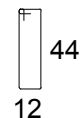
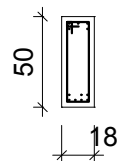
V26 (18 x 50)

ESC 1:100



SEÇÃO A-A

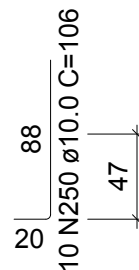
ESC 1:50



28 N244 \varnothing 5.0 C=123

ESPERA P25

ESC 1:50



10 N250 \varnothing 10.0 C=106

20

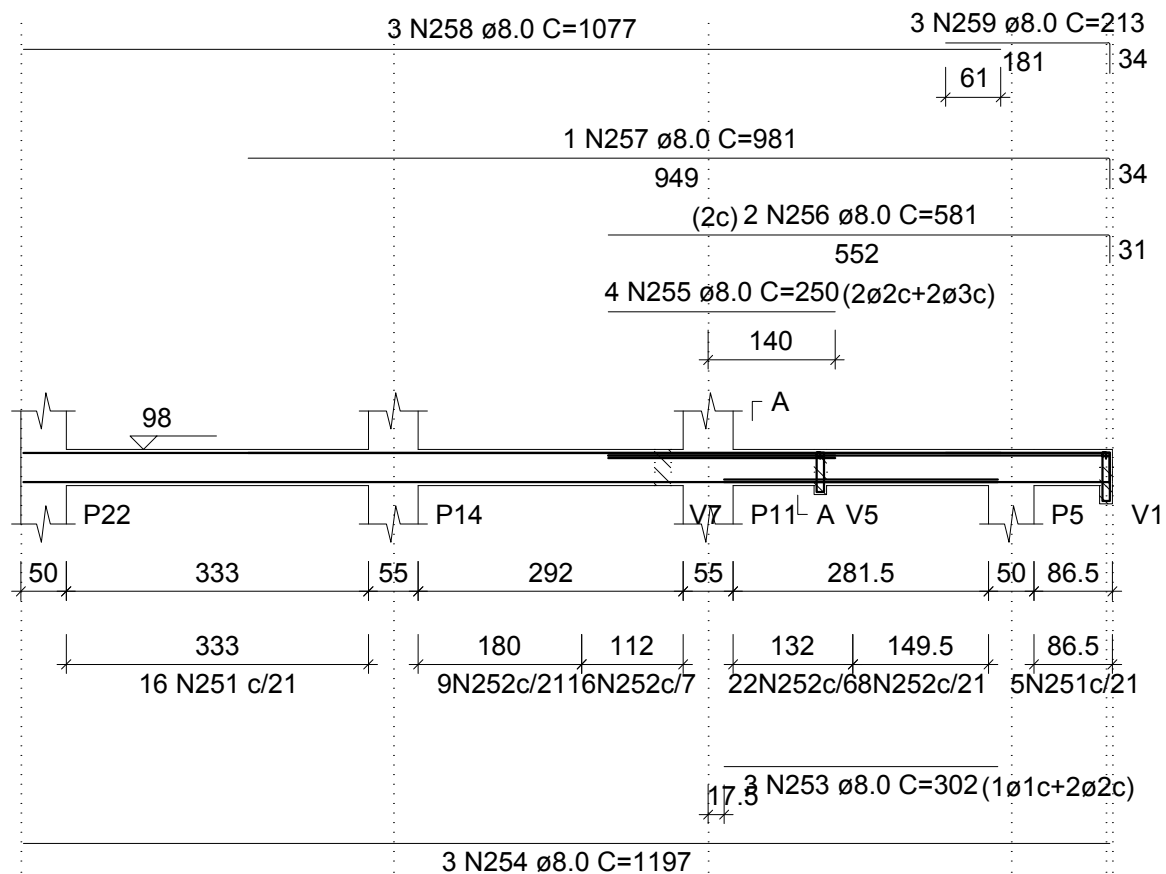
29

4 N245 \varnothing 5.0 c/12 C=93

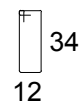
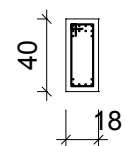
4 N246 \varnothing 5.0 C=27

V27 (18 x 40)

ESC 1:100



SEÇÃO A-A
ESC 1:50



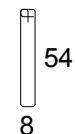
21 N251 \varnothing 5.0 C=103
55 N252 \varnothing 6.3 C=104

SUSPENSÃO V5
ESC 1:50



3 N260 \varnothing 8.0 C=116

SUSPENSÃO V1
ESC 1:50

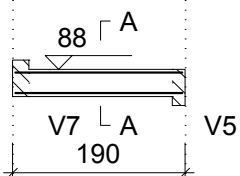


1 N261 \varnothing 8.0 C=136

V28 (14 x 30)

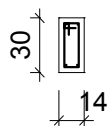
ESC 1:100

2 N263 \varnothing 5.0 C=184



2 N264 \varnothing 8.0 C=184

SEÇÃO A-A
ESC 1:50

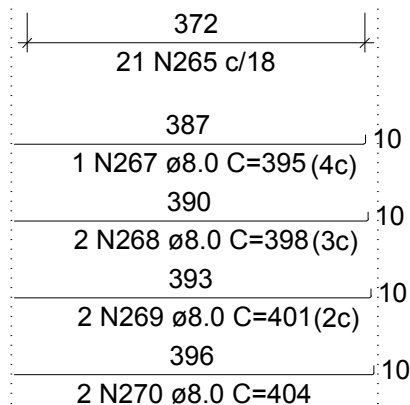


11 N262 \varnothing 5.0 C=75

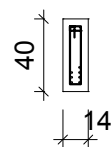
V29 (14 x 40)

ESC 1:100

2 N266 \varnothing 5.0 C=396



SEÇÃO A-A
ESC 1:50

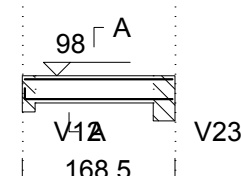


21 N265 \varnothing 5.0 C=87

V31 (14 x 30)

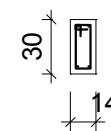
ESC 1:100

2 N284 \varnothing 10.0 C=162



12 N285 \varnothing 10.0 C=172

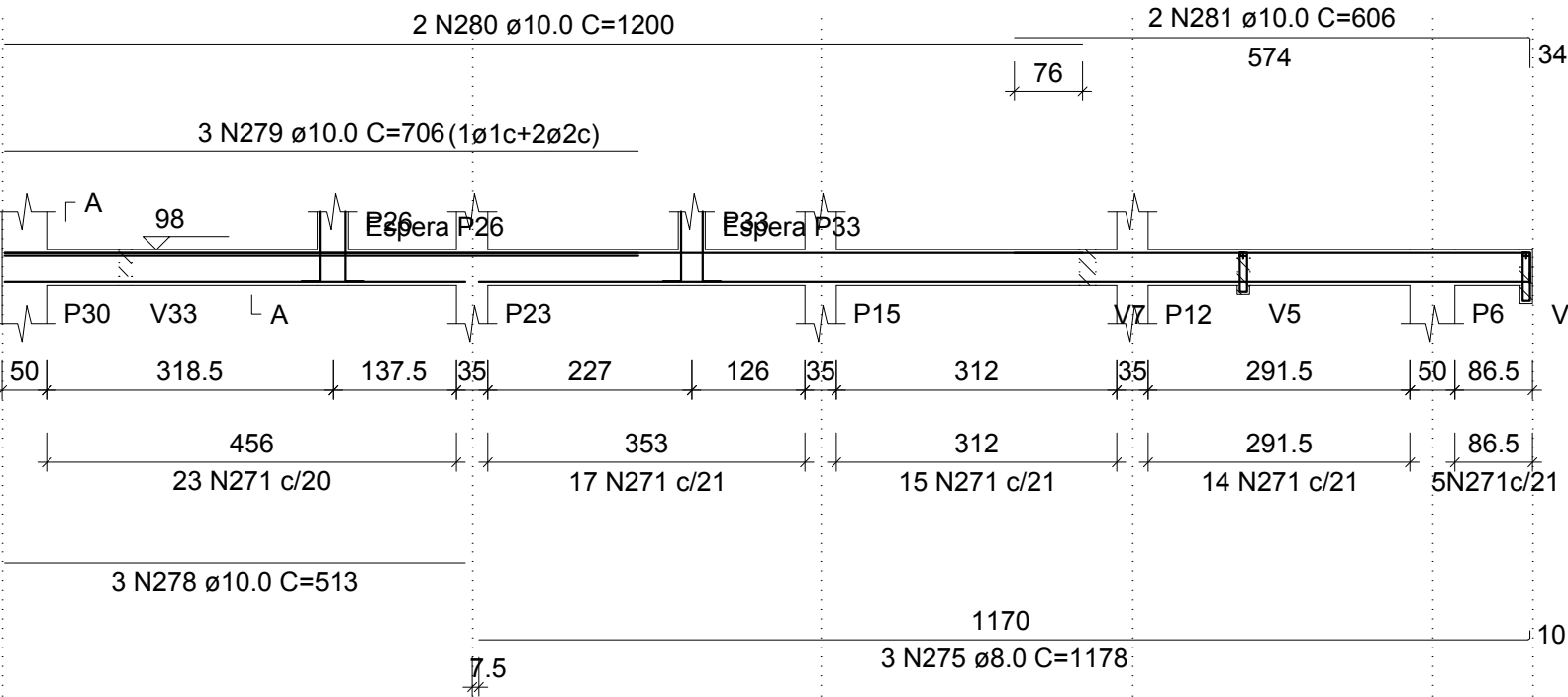
SEÇÃO A-A
ESC 1:50



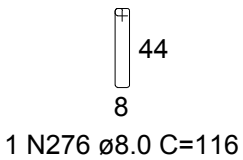
19 N283 \varnothing 5.0 C=75

V30 (18 x 40)

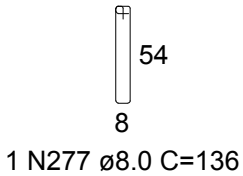
ESC 1:100



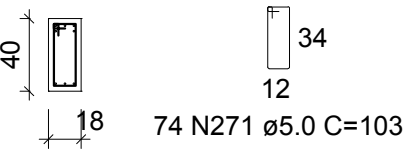
SUSPENSÃO V5
ESC 1:50



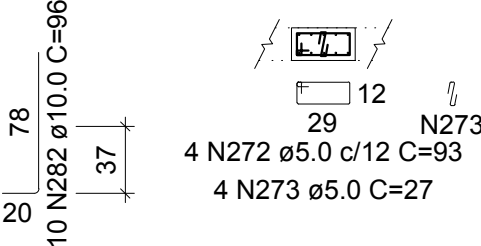
SUSPENSÃO V1
ESC 1:50



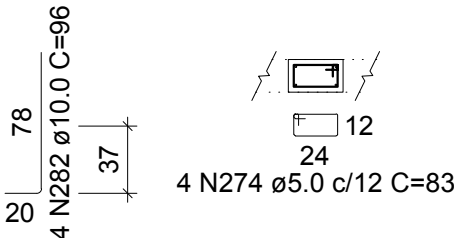
SEÇÃO A-A
ESC 1:50



ESPERA P26
ESC 1:50



ESPERA P33
ESC 1:50

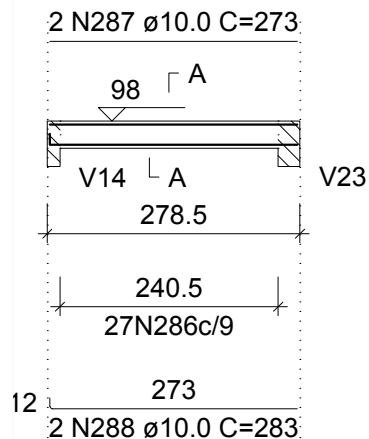


V32 (14 x 30)

ESC 1:100

SEÇÃO A-A

ESC 1:50

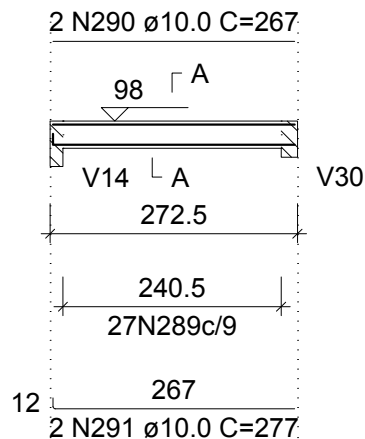


V33 (14 x 30)

ESC 1:100

SEÇÃO A-A

ESC 1:50

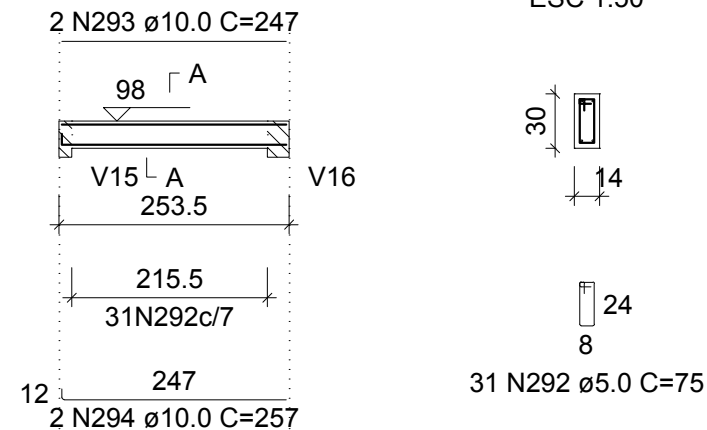


V34 (14 x 30)

ESC 1:100

SEÇÃO A-A

ESC 1:50

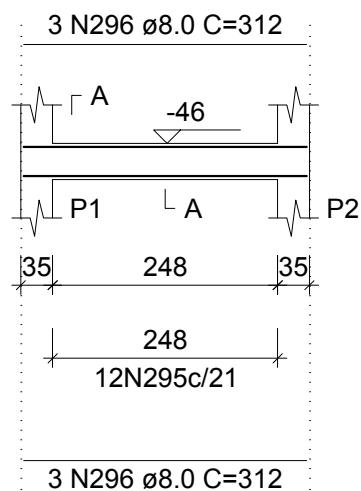


V35 (18 x 40)

ESC 1:100

SEÇÃO A-A

ESC 1:50

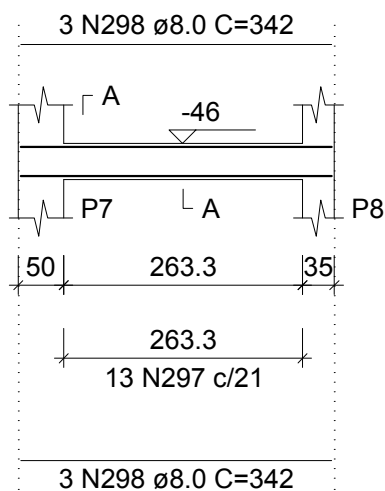


V36 (18 x 40)

ESC 1:100

SEÇÃO A-A

ESC 1:50

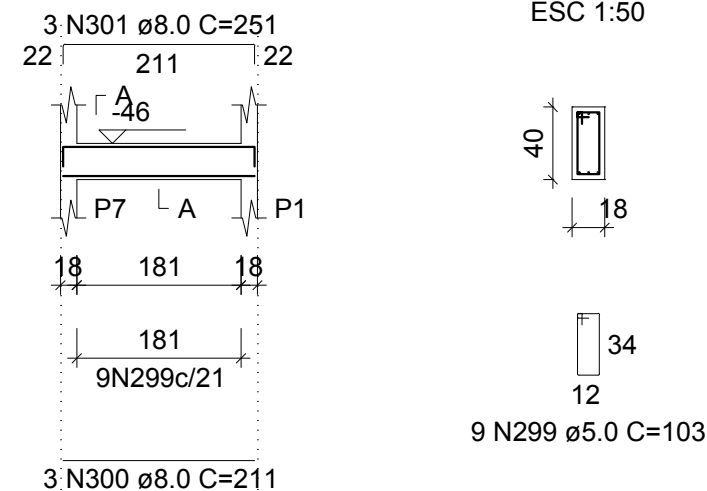


V37 (18 x 40)

ESC 1:100

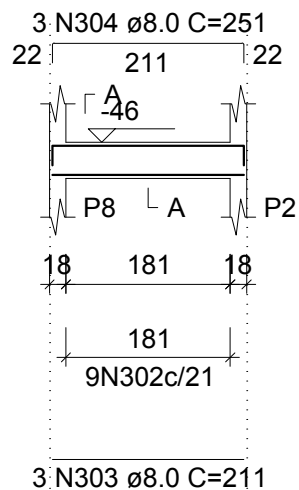
SEÇÃO A-A

ESC 1:50



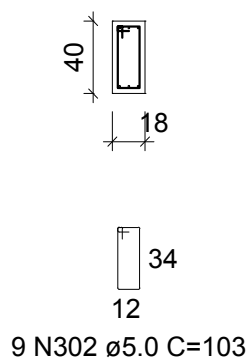
V38 (18 x 40)

ESC 1:100



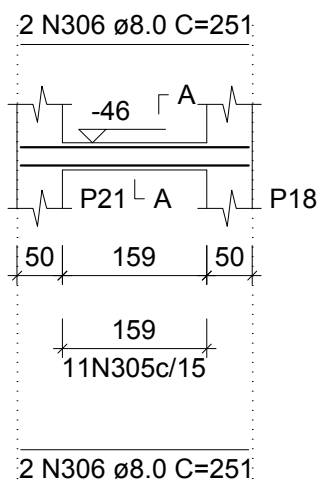
SEÇÃO A-A

ESC 1:50



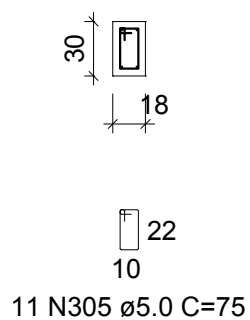
V39 (18 x 30)

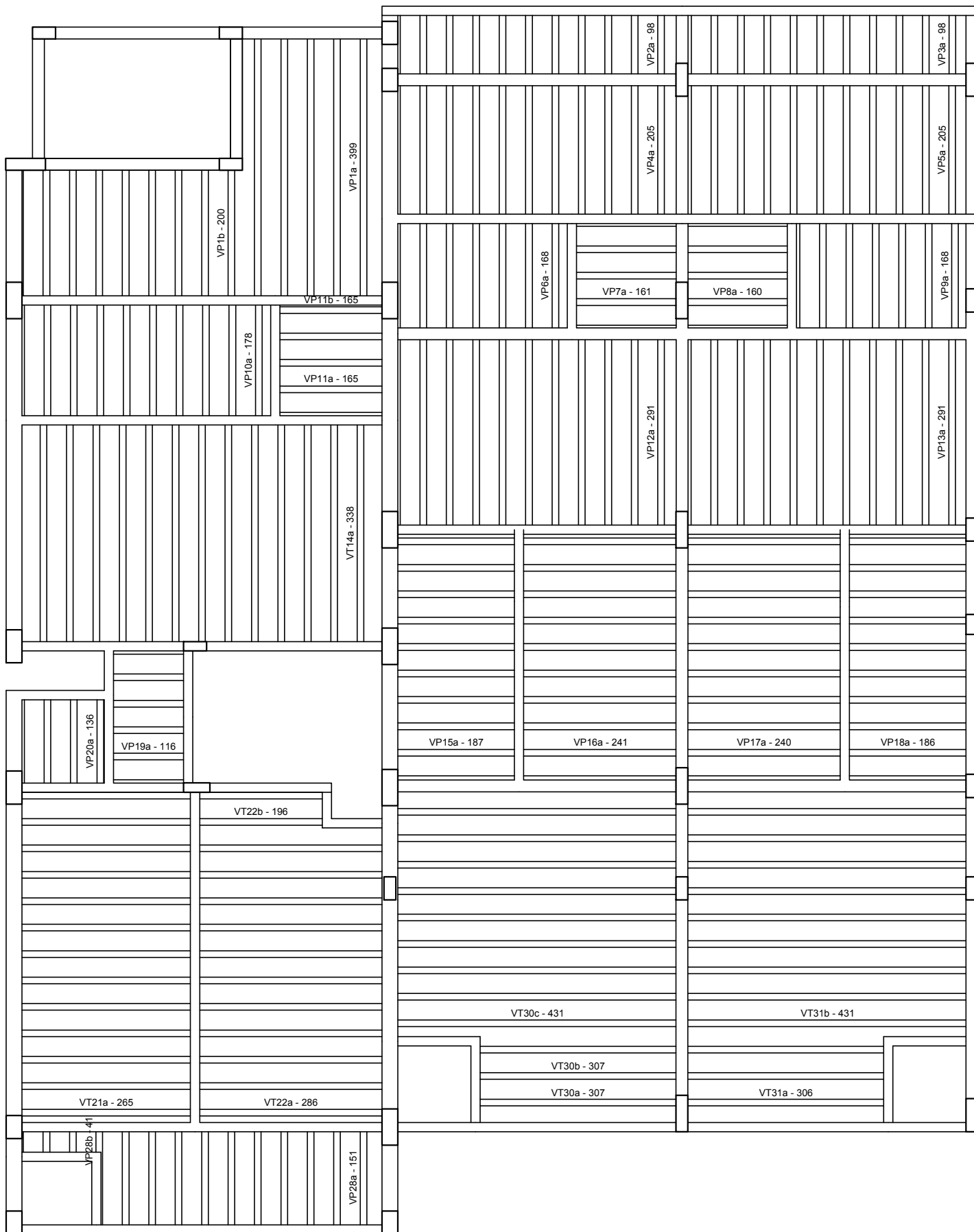
ESC 1:100



SEÇÃO A-A

ESC 1:50





Planta de vigotas pré-moldadas

escala 1:50